



# Introduction to SeaVision Interface

## Lesson 2.1

07/01/2020

DISTRIBUTION STATEMENT A. Approved for public release: distribution unlimited.





## Lesson 2.1 Objectives

Upon successful completion of this lesson, the student will be able to:

- Identify the major areas and navigation of the interface to include:
  - Navigation Bar
  - Main Menu
    - (MY LAYERS, STATIC LAYERS, MAP TOOLS)
  - Map (drop-down list)
  - Dashboard
    - (Rules, Alerts, Warnings, Vessel Lists)
  - Search
  - Chat
  - Notifications
  - Communities/Personas
  - My Account
  - Map Background
    - (Display icons, colors, vessel density)



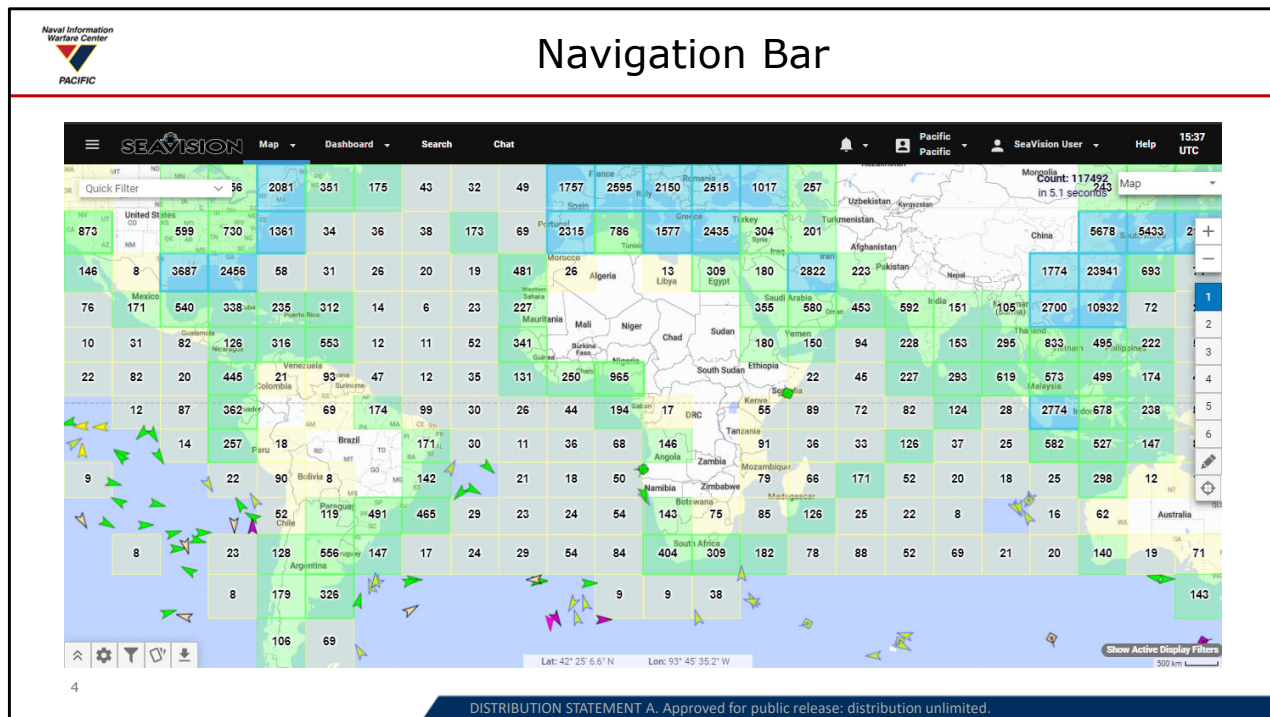


## Lesson 2.1 Objectives Cont.

Upon successful completion of this lesson, the student will be able to:

- Identify the major areas and navigation of the interface to include:
  - Map Display Types
  - Custom Map Views
    - Create Custom Map Views
    - Zoom
    - Jump To
  - Show/Hide Active Filter
  - Latitude & Longitude
  - Map Options
    - Map Settings
      - Map Filters
      - Baseball Card Settings
      - Export Vessels
  - Quick Filter





- The menu button toggles open/close the left-side menu
- The drop-down options for both the Map and the Dashboard
- The Search feature allows users to perform searches that can be saved, shared, and display results on the map
- The Chat link opens SeaVision Chat in a separate chat window
- The Notifications bell is for user's Rules, Alerts, and Request Inbox
- The Request Inbox notification shows when a user's Community Manager has acted on their request
- The Switch Persona drop-down allows users with multiple personas to switch between them
- The User drop-down is where users can update their password, set their preferences, etc.
- The Help button offers solutions to common issues and a link to the SeaVision User Guide
- The UTC clock provides a quick reference for the current Coordinated Universal Time (UTC) time





## Navigation Bar



The SeaVision navigation bar is viewable from both the Map and the Dashboard views and contains the following:

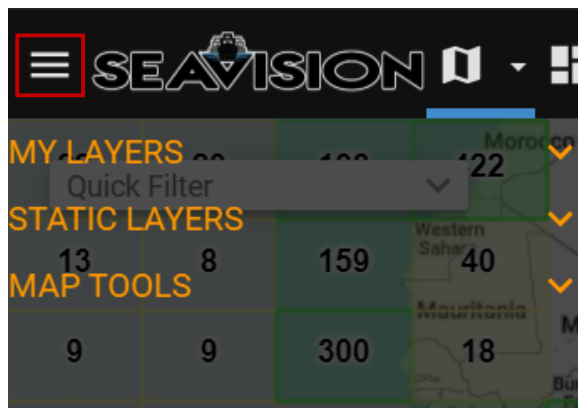
- Main Menu
- SeaVision logo
- Map and Dashboard controls
- Search feature
- Chat feature
- Notifications
- Switch Persona
- User controls (password, preferences)
- Help
- Coordinated Universal Time (UTC) clock





## Main Menu

- Provides custom displays and options for SeaVision:
  - MY LAYERS
    - User defined shapes
    - Add Custom Layer
  - STATIC LAYERS
    - Custom Map Attributes
  - MAP TOOLS
    - Distance Tool
    - Manual Report
    - Time Machine







MY LAYERS

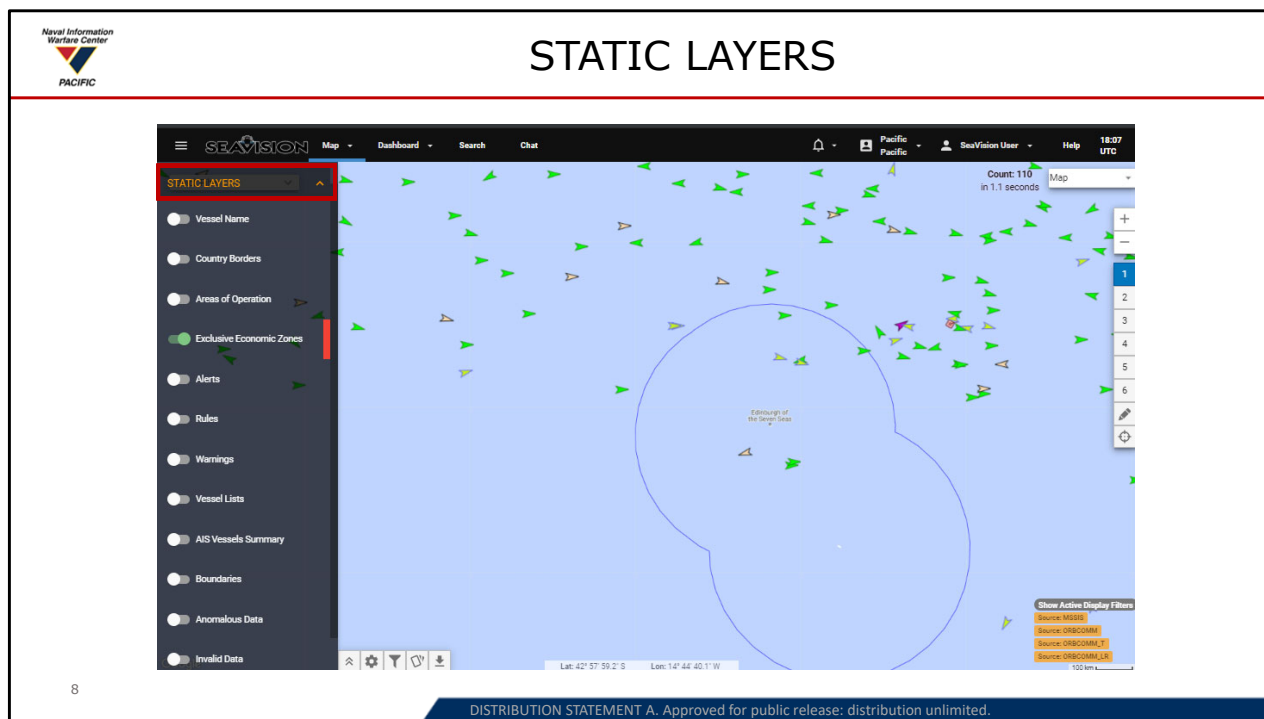
- Selecting the edit tool activates the Shapes Manager

7

DISTRIBUTION STATEMENT A. Approved for public release: distribution unlimited.

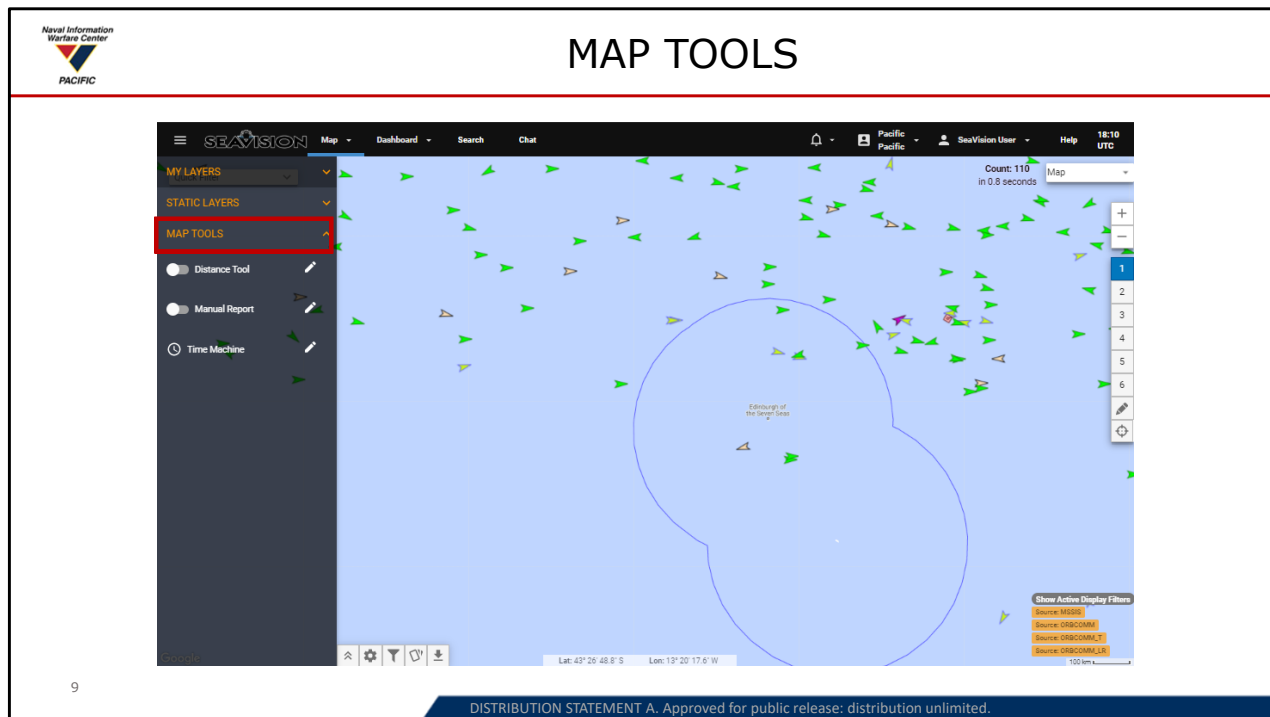
- Shapes enable users to select and highlight a region of interest to track vessel activity
- Supported shape types include marker, polyline, polygon, circle, and rectangle
- A user-defined shape can be used to designate a geospatial area for Searches, Rules, and/or Alerts





- Static Layers allow users to toggle on/off map attributes





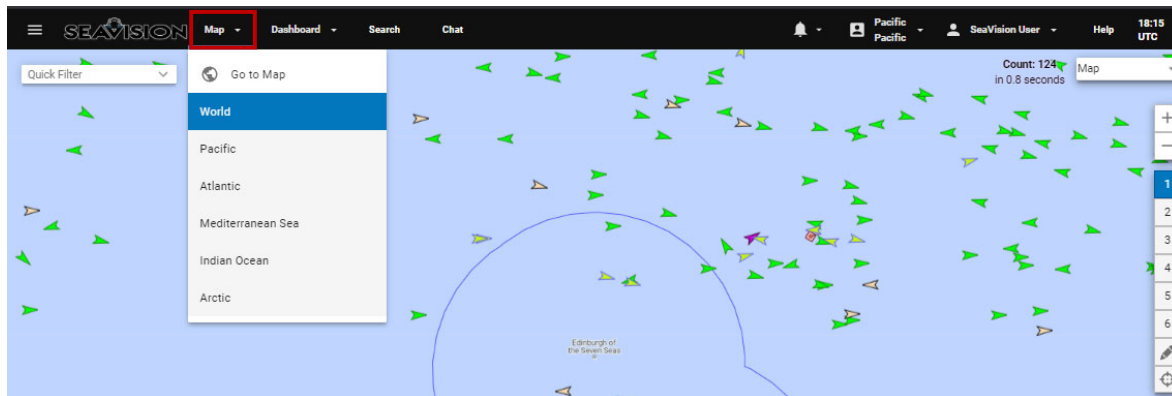
- Map Tools provides a series of tools to aid in tracking and search activities
  - This tab includes:
    - Distance Tool - add a Rhumb Line or Great Circle to an area of interest
    - Manual Report - add a vessel or incident to the map
    - Time Machine - shows all vessels' last known positions in a 4 hour window prior to a user selected date and date and time





## Map

- A drop-down list of a user's saved map views



10

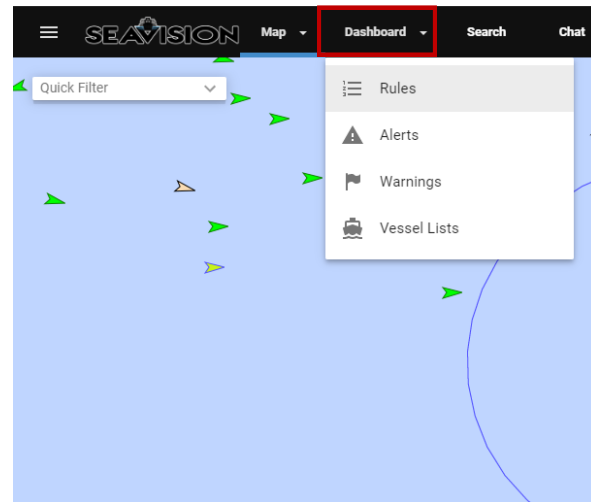
DISTRIBUTION STATEMENT A. Approved for public release: distribution unlimited.





## Dashboard

- Rules
- Alerts
- Warnings
- Vessel Lists







- The + allows users to create new Rules
- All active Rules are listed in the first column in the Active Rules window
- The center column shows a summary of the active rule highlighted in the first column
- At the top of the column are the options to edit the rule, run the rule, and share the rule
- Below that are the conditions of the rule as well as the schedule for when SeaVision will run the rule
- In the third column are the vessel results for the rule
- Users have the options to export the vessel results, save the results as a list, map the results, or adjust the settings for the results section





Naval Information Warfare Center  
PACIFIC

# Alerts

+

Active Alerts (1)

My Alerts

Persona

Community

All

1

USS: Your Name Here

Disabled Alerts (0)

My Alerts

Persona

Community

All

No Data

Alert Definition

Your Name Here

YOUR NAME HERE

LAST UPDATED

2020-05-29 19:13:51 by SeaVision User

TRIGGERS

Entering ROI

ON

Exiting ROI

ON

REGION OF INTEREST (ROI)

EEZs

AOs

TWs

Shapes

Your Name Here

RUNTIME INFORMATION

Results - Vessels Matching Alerts (329)

Vessel Results

Vessel Analytics

EXPORT

SAVE AS LIST

MAP RESULTS

SETTINGS

	↓ TIMEST...	AGE	IMO	MMSI	ALERT N...	TRIGGER	VESSEL ...
1	2020-06-...	1d 10h 2...	9353151	5742950...	Your Na...	Entered ...	Thanh T...
2	2020-06-...	1d 10h 4...	9647966	5740127...	Your Na...	Entered ...	Hai Ha 5...
3	2020-06-...	1d 11h 1...	9906996	5740143...	Your Na...	Entered ...	Dkc 02
4	2020-06-...	1d 11h 2...	—	5740126...	Your Na...	Entered ...	Nam Ph...
5	2020-06-...	1d 13h 5...	—	5741002...	Your Na...	Entered ...	Hp2096
6	2020-06-...	1d 14h 3...	9318905	5740025...	Your Na...	Exited S...	Phuc Kh...
7	2020-06-...	1d 14h 5...	—	5741002...	Your Na...	Exited S...	Hp2096
8	2020-06-...	1d 15h 1...	9336335	5743560...	Your Na...	Entered ...	Blendon...
9	2020-06-...	1d 16h 2...	9564176	5745380...	Your Na...	Exited S...	Nashico ...
10	2020-06-...	1d 16h ...	—	574013	Your Na...	Exited S...	An Bhat

13

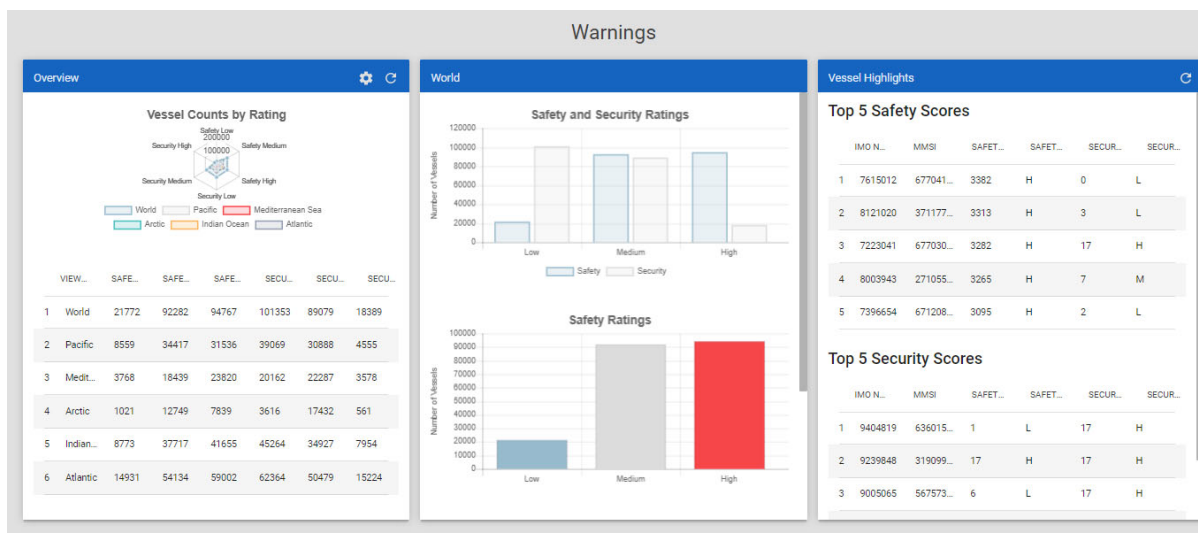
DISTRIBUTION STATEMENT A. Approved for public release: distribution unlimited.

- The + allows users to create new Alerts
- Active alerts are listed in the first column under Active Alerts
- The center column shows a summary of the active alert, highlighted in the first column
- At the top of the column are the options to edit the alert or share the alert
- Below that are the conditions of the alert
- In the third column are the vessel results for the alert
- Users have the options to export the vessel results, save the results as a list, map the results, or adjust the settings for the results section





## Warnings







Naval Information Warfare Center  
PACIFIC

## Warnings Cont.

The screenshot displays the SeaVision interface with the 'Warnings' layer selected in the 'STATIC LAYERS' menu. A vessel's baseball card is shown, and a detailed warning panel for 'lolcos Vision' is open. The panel includes the following information:

- Source:** SATELLITE AIS
- Time:** 2020 Jun 17 18:36:56 UTC
- Age:** 0h 20m 29s ago
- Position:** 36° 6' 59" S, 17° 11' 37" W
- Speed:** 11.3 kts
- Heading:** 90°
- Course:** 88°
- MMSI:** 249947000
- IMO Number:** 9425148
- Flag:** Malta
- Call Sign:** 9HA2091
- Ship Type:** 7-Cargo
- Length:** 229 m
- Beam:** 36 m
- Draft:** 13.6 m
- Navigation Status:** 0-Underway(Engine)
- Destination:** Singapore
- ETA:** 07/10 @ 12:00 UTC

The 'lolcos Vision' panel also features a 'SAFETY' section with a bar chart showing various safety metrics:

Metric	Score/Value
Flag State - Safety	0
Ship Management	0
Classification Society	0
PSC Inspection History	0
PSC Detention History	0
Non-detainable inspection defects	0
Age & Type of Vessel	0
Changes in Owner/Operator/Manager/Flag	0

The 'Safety Score and Rating' is 6 (Low).

- Warnings can be selected as a Static Layer that highlights vessels with a color coordinating with the vessel's warning status
- Users can view the warning details of a vessel by selecting the Warnings icon, a flag, on the vessel's baseball card



Naval Information Warfare Center  
PACIFIC

## Vessel Lists

16

DISTRIBUTION STATEMENT A. Approved for public release: distribution unlimited.

- The + allows users to create new Vessel Lists
- The lists a user has created will be listed under My Lists
- Selecting a Vessel List from My Lists will trigger the list to be displayed in the window on the right of the screen as well as be mapped in the map view within the Vessel Lists window
- From the list view, users have the option to add vessels to the list, download the vessel list, adjust the settings of the list columns, or map the vessels on the main SeaVision map
- Additionally, the user has the options to add notes to each vessel on the list, activate history trails for each vessel on the list, or delete the vessel from the list





# Search

Search

Manage

✓

Choose How To Evaluate Your Conditions

☒ Vessels must meet all conditions

☐ Vessels can meet any condition

✓

Set Up Your Conditions

Vessel Type

is

00 - Unknown

X

ADD CONDITION

✓

Choose The Time Period To Evaluate

Vessel Age

1 hr

No Maximum

✓

Done!

SEARCH

Search Results (146606 total vessels)

EXPORT

SAVE AS LIST

MAP RESULTS

	FLAG	VESSEL NAME	↑ MMSI	IMO NUMBER	LATITUDE	LONGITUDE
1	—	888-2	1000000002	0	37.958928	120.408387
2	—	Hi Flyer	1000000014	0	43.517433	-65.735215
3	—	02305 Zhao	1000000002	0	20.6782	108.58739
4	—	Zhexiangyu0313...	1000000021	0	29.226507	121.951267
5	—	Zhexiangyu7611...	1000000022	0	28.571488	122.640795
6	—	60129-8	1000000024	0	26.283098	120.265325
7	—	Biao62589-2	1000000027	0	26.1763	120.249047
8	—	Zhedingyu06208...	1000000028	0	29.869722	122.370575
9	—	Zhe Pu Yu 68827...	1000000029	0	29.195962	121.941533
10	—	Zhexiangyu7611...	1000000030	0	28.50321	122.632655
11	—	Qiu-07	1000000031	0	38.525047	120.506772
12	—	Sudongtaiyu009...	1000000032	0	32.563313	121.039932

17

DISTRIBUTION STATEMENT A. Approved for public release: distribution unlimited.





Chat

- Chat Channels
- Community
- Persona
- Direct Messages

Pacific

Tue Jun 16 2020

S

SeaVision User

9:53AM

SeaVision User joined the channel.

Write a message...

Pacific

SeaVision User

online

Translation Settings

Language: English

Disclaimer

Community

567 Pacific

Persona

Pacific

+

18

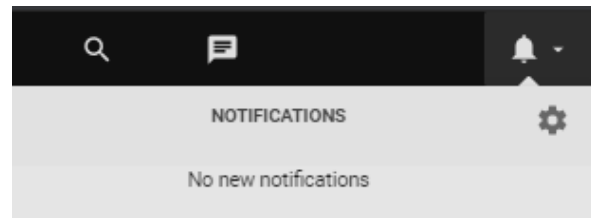
DISTRIBUTION STATEMENT A. Approved for public release: distribution unlimited.





## Notifications

- The Notifications icon is a bell
- Selecting the bell opens the notification window
- Notifications can pertain to Alerts or Rules



19

DISTRIBUTION STATEMENT A. Approved for public release: distribution unlimited.

- Numbers appear in a red bubble by the bell when there are new or unviewed notifications





Naval Information Warfare Center  
PACIFIC

COMMUNITIES/PERSONA

PERSONAS

Pacific

Training\_Malaysia

Training\_Philippines

Training\_Thailand

Training\_Vietnam

COMMUNITIES

Pacific

Change Default Persona

My Preferences

Default Persona

Select a default persona

Pacific / Pacific

UPDATE DEFAULT PERSONA

20

DISTRIBUTION STATEMENT A. Approved for public release: distribution unlimited.

- Users can quickly change the persona they are in by utilizing the drop-down menu
- Users can change their default persona from My Preferences within the My Account portion of their profile





Naval Information Warfare Center  
PACIFIC

Pacific Pacific

SeaVision User

Inbox

My Account

Help

Logout

My Login and Profile

Login

USA-NIWC-User

Profile

SeaVision User  
seavisionuser@navy.mil  
xxxxxxx  
xxxxxx  
xxxx  
xxxx

My Communities

These are the communities that you are a part of:

Pacific

Pacific Fleet and ASEAN  
Member Nations

My Preferences

Access and configure any SeaVision settings here:

Default Persona

Change persona to automatically switch into upon login

Rules

Change columns to view in results table

Alerts

Change columns to view in results table

21

DISTRIBUTION STATEMENT A. Approved for public release: distribution unlimited.





## User Profile: My Login and My Profile

### My Login

Username	<input type="text" value="USA-NIWC-User"/>	<a href="#">EDIT USERNAME</a>
Password	<input type="password" value="*****"/>	<a href="#">EDIT PASSWORD</a>
<a href="#">SETUP MULT-FACTOR AUTHENTICATION</a>		
<a href="#">MANAGE API KEYS</a>		

### My Profile

<a href="#">EDIT PROFILE</a>		
First Name	Last Name	
SeaVision	User	
Email ("unverified")	<a href="#">SEND VERIFICATION EMAIL</a>	
seavisionuser@navy.mil		
Country Calling Code	Phone	
+1	XXXXXXXXXX	
Address		
XXXXXX		
Agency	Organization	Org (Abbr)
XXXX	XXXX	NIWC
Nationality		
United States Of America		





My Communities

Community Pacific

Join a Community

Pacific

Pacific Fleet and ASEAN Member Nations

Total Users  
704

Inactive Users  
173

PERSONAS

Community Manager	AOs: 1	EEZs: 1	Users: 26
Airbus SATSAR	AOs: 1	EEZs: 1	Users: 7
Australia	AOs: 1	EEZs: 1	Users: 49

EMAIL LIST

23

DISTRIBUTION STATEMENT A. Approved for public release: distribution unlimited.





Naval Information Warfare Center  
PACIFIC

Help Desk

SEAVISION

Map

Dashboard

Search

Chat

Pacific Pacific

SeaVision User

Help

15:37 UTC

Help Desk

Frequently Asked Questions

1. How do I join a new Community?

2. How do I change my default Persona after logging in?

3. Why are no vessels showing up on the map?

4. Why do I get an error message when trying to toggle on a history trail?

5. Is there a quick way to remove all history trails on map?

How do I join a new Community?

1. Go to *My Account > Communities > Join a Community*

2. Select a Community from the list of Communities available.

3. To begin, click on the quick link: [Join A Community](#)

How do I change my default Persona after logging in?

24

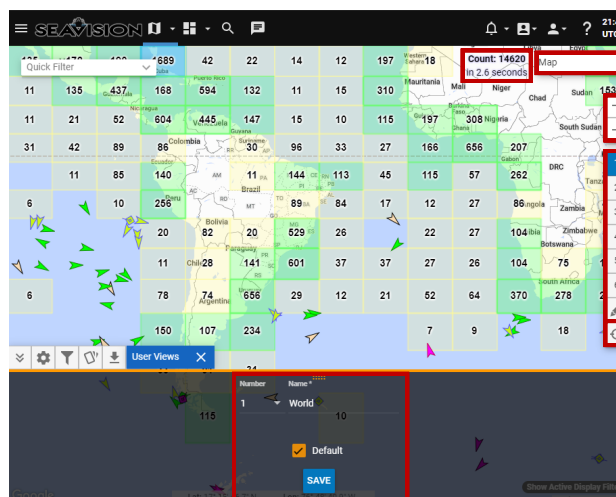
DISTRIBUTION STATEMENT A. Approved for public release: distribution unlimited.





## Map Display

- Vessel Density
- Count
- Map Type
- Custom Views
- Jump To
- Zoom



25

DISTRIBUTION STATEMENT A. Approved for public release: distribution unlimited.

- SeaVision Map Display – shows ship count density
  - Blue = Greater than 1000
  - Green = 100-1000
  - Yellow less than 100





## Vessel Count and Map Type

Count: 14613  
in 2.7 seconds

Dark Simple

Vintage

Midnight

Gray

Map

Satellite

Hybrid

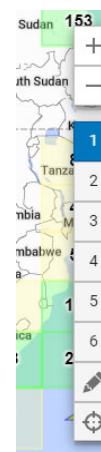
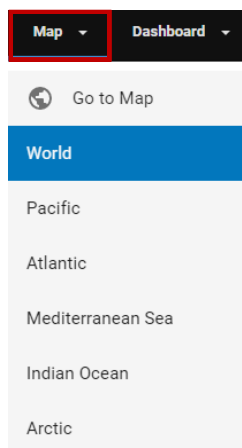
Terrain





## Map View-Custom Views

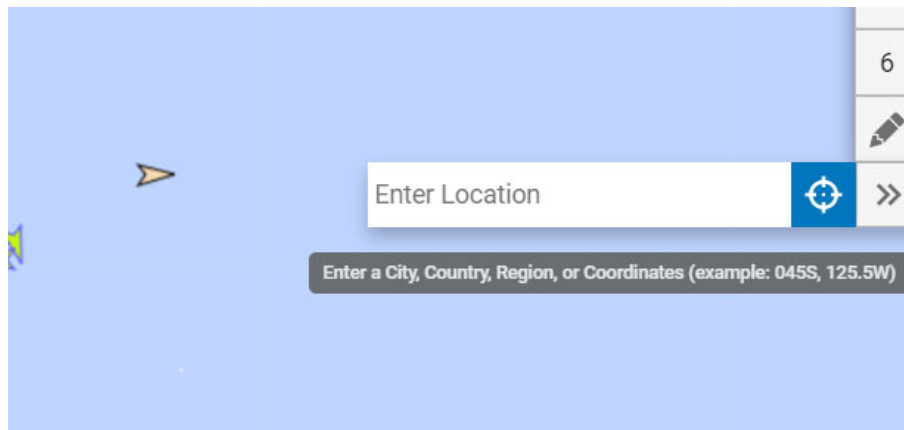
- Custom Views
  - Create a custom view with map details and save to a preset number
  - 6 custom user-created map views
  - Edit view
- Map drop-down lists available custom views
- Zoom Functions







## Jump to Location

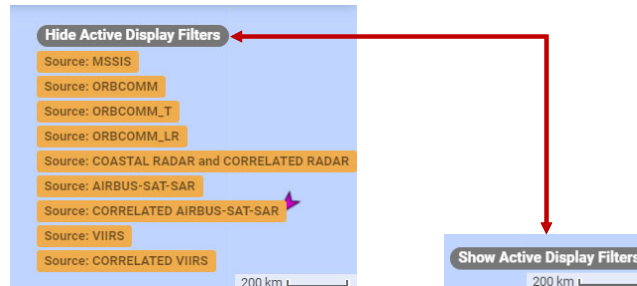






## Show/Hide Active Filters

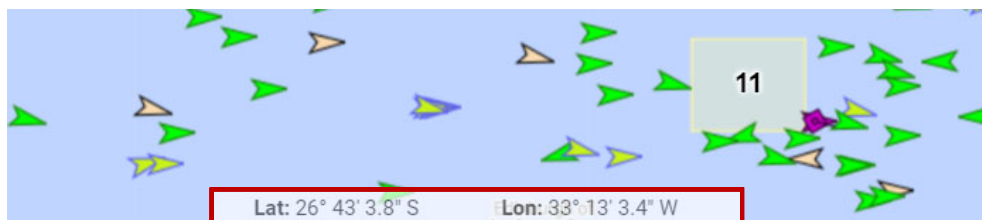
- Display Filter Toggle
  - Short listing of active filters








## Latitude and Longitude

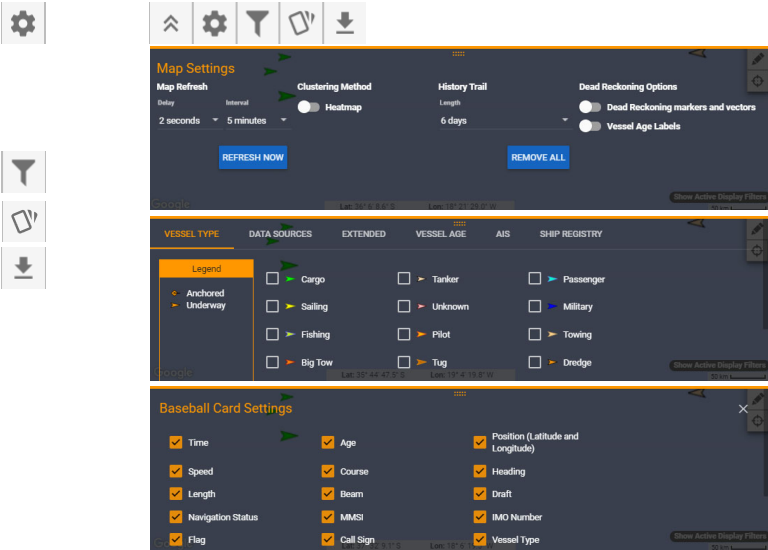






## Map Options

- Map Settings
  - Map Refresh
  - History Trail
  - Dead Reckoning Options
- Map Filters
- Baseball Card Settings
- Export Vessels



31
DISTRIBUTION STATEMENT A. Approved for public release; distribution unlimited.

- Map Refresh
  - Refresh Delay - adjusts the time between pan movements before reloading the page
    - Users can choose from 0 to 10 seconds
  - Refresh Interval - updates the current locations of all vessels on the Map display
    - The rate can be set between 1 or 10 minutes
- History Trail - Display vessels' last reported positions from 1 to 90 days
- Dead Reckoning (DR) Options - DR vectors provide a visual overlay on the map to display where a ship may be based on the dead reckoning calculation considering the time elapsed from a vessel's last reported position, heading, and speed





## Map Filters

- Vessel Type
- Data Sources
- Extended

The screenshots illustrate the 'Map Filters' interface in SeaVision. The first screenshot shows the 'VESSEL TYPE' tab with a legend for vessel types: Cargo, Tanker, Passenger, Military, Fishing, Pilot, Towing, Dredge, and Big Tow. The second screenshot shows the 'DATA SOURCES' tab with options for AIS and Simulated AIS. The third screenshot shows the 'EXTENDED' tab with options for Vessel Lists, Rules, Alerts, and Warning Scores.

32

DISTRIBUTION STATEMENT A. Approved for public release: distribution unlimited.

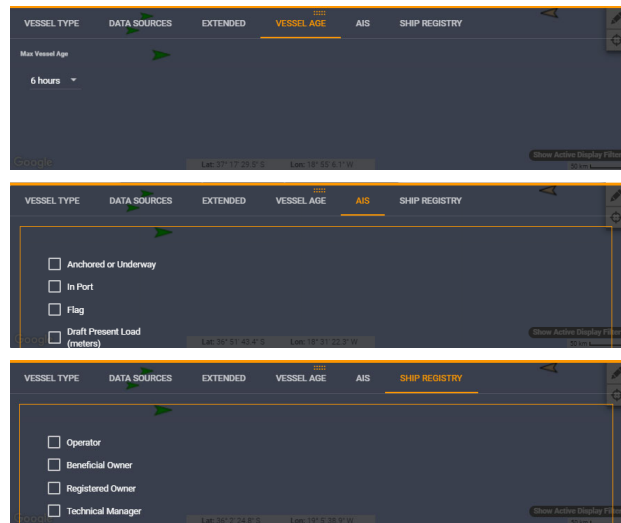
- The Vessel Filters tab lists a variety of vessel-related filters within SeaVision
- Users can run multiple filters simultaneously and can show vessels that match select criteria, user-defined rules and/or alerts, and saved custom vessels
  - This tab includes:
    - Filter by Vessel Type: an icon key that lets users select the types of vessels that they wish to see on the Map, as the display defaults to showing all vessel types
    - Data Sources: toggle on/off Data Sources
    - Extended: allows filters to be set by Vessel List, Rules, Alerts, Warning Scores, and/or Anomalies





## Map Filters Cont.

- Vessel Age
- AIS
- Ship Registry




33

DISTRIBUTION STATEMENT A. Approved for public release: distribution unlimited.

- Vessel Age: changing this affects the age of vessel reports displayed
  - The most recent report will be shown for each vessel from vessel age selected to current time
- AIS: allows users to filter vessels based off AIS fields
- Ship Registry: allows users to filter vessels based off Ship Registry information







## Baseball Card Settings

- Select/Deselect Items
- History Trail
- DR Vector
- Vessel Details
- Add Vessel to Lists
- Download or Print Information

### Baseball Card Settings

<input checked="" type="checkbox"/> Time	<input checked="" type="checkbox"/> Age	<input checked="" type="checkbox"/> Position (Latitude and Longitude)
<input checked="" type="checkbox"/> Speed	<input checked="" type="checkbox"/> Course	<input checked="" type="checkbox"/> Heading
<input checked="" type="checkbox"/> Length	<input checked="" type="checkbox"/> Beam	<input checked="" type="checkbox"/> Draft
<input checked="" type="checkbox"/> Navigation Status	<input checked="" type="checkbox"/> MMSI	<input checked="" type="checkbox"/> IMO Number
<input checked="" type="checkbox"/> Flag	<input checked="" type="checkbox"/> Call Sign	<input checked="" type="checkbox"/> Vessel Type

### lolos Vision

Source: SATELLITE AIS  
Time: 2020 Jun 16 22:06:56 UTC  
Age: 0h 9m 18s ago  
Position: 36° 28' 10" S, 21° 59' 46" W  
Speed: 11.6 kts  
Heading: 86°  
Course: 86°  
MMSI: 249947000  
IMO Number: 9425148  
Flag: Malta  
Call Sign: 9HA2091  
Ship Type: 7-Cargo  
Length: 229 m  
Beam: 36 m  
Draft: 13.6 m  
Navigation Status: 0-Underway(Engine)  
Destination: Singapore  
ETA: 07/10 @ 12:00 UTC

History Trail

DR Vector

Vessel Details

Add Vessel to List


34

DISTRIBUTION STATEMENT A. Approved for public release: distribution unlimited.

- Baseball Card
  - The pop-up display of vessel attributes can be customized in Baseball Card Settings
  - Toggle on/off Individual History Trail or DR Vector
  - Vessel Details provides a more in-depth report of known vessel attributes and the ability to export vessel data
  - Add Vessel to List allows user to add the vessel to an existing or a new vessel list
  - Alerts/Rules Indicates if a Vessel meets pre-established alerts or rules
  - The Warning Details icon displays warning details








## Export Vessels

- Export the vessels in the screen view as a KML formatted file

Opening lists-export-vessel-list-2019-09-17\_09-18.kml

You have chosen to open:  
 **lists-export-vessel-list-2019-09-17\_09-18.kml**  
which is: XML Document (650 bytes)  
from: blob:

What should Firefox do with this file?

☒ Open with Office XML Handler (default)

☐ Save File

☐ Do this automatically for files like this from now on.

OK

Cancel

35

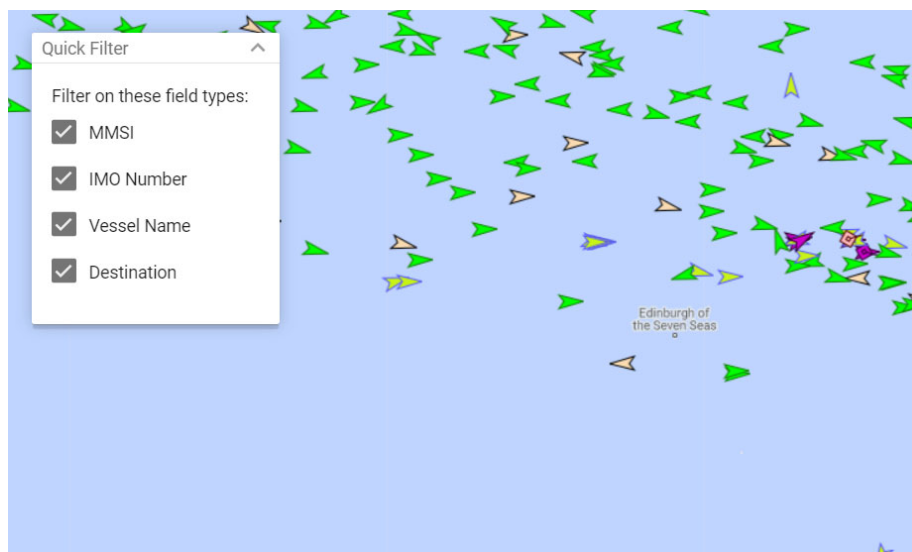
DISTRIBUTION STATEMENT A. Approved for public release: distribution unlimited.

- A KML file stores geographic modeling information in XML format
- Includes points, lines, polygons, and images
- KML files are used to identify and label locations, create different camera angles, overlay textures, and add HTML content
- Google earth is a common application that uses KML files





## Quick Filter



36

DISTRIBUTION STATEMENT A. Approved for public release: distribution unlimited.





## Introduction to SeaVision Interface Summary

- Identify the major areas and navigation of the interface to include:
  - Navigation Bar
  - Main Menu
  - Map (Quick List)
  - Dashboard
  - Search
  - Chat
  - Notifications
  - Communities/Personas
  - My Account
  - Map Background
  - Map Display Types
  - Custom Map Views
  - Show/Hide Active Filter
  - Latitude & Longitude
  - Map Options
  - Quick Filter





Questions?

